

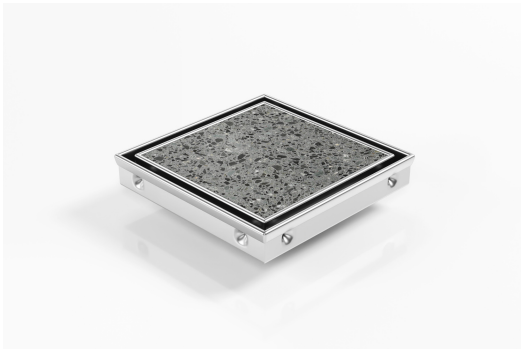


ARCHITECTURAL
GRATES + DRAINS



SQP100Ti20DN50

Square Floor Waste



The SQP100Ti is a premium floor waste drain.

Manufactured from 316 marine grade stainless steel it features a premium tile insert drain and will suit a tile thickness of up to 12mm.

The SQP100Ti can be combined with the 100Ti or 65Ti linear drainage units for a unified look.

Code SQP100Ti20DN50

Range Square

Grate Style Ti

Category Square Floor Waste

Channel Material Stainless Steel

Steel Grade 316

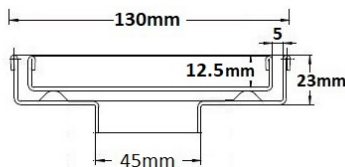
SPECIFICATIONS + DIMENSIONS

Channel Width	130mm - 130mm
Channel Depth	23mm
Length(s)	As Required
Outlet Size	DN50

STORMTECH COLOUR FINISHES



Electroplate finishes subject to natural variation with time and local environment. Factors such as pools/surf beaches may require electropolishing. Contact us for suitability.



Grates longer than 1500mm supplied in sections. Tile Inserts longer than 1200mm supplied in sections. Channels over 3000mm supplied in sections with joiner. +/-2mm tolerance on dimensions.

PRODUCT APPLICATIONS

Bathroom Drainage	Paved Area Drainage
Balcony Drainage	Shower Drainage
Commercial Drainage	Special Needs Drainage
Courtyard / Patio Drainage	Threshold Drainage
Driveway Drainage	Suspended Slab Drainage
Pool and Spa Area Drainage	Wet Area Drainage

Copyright © Stormtech Pty Ltd. Patent 733361. Drawings not to scale, please use dimensions shown.
Downloaded 14/06/2026 (please check for updates)



Visit stormtech.com.au
for tools + inspiration.

Phone **1300 653 403**

Email info@stormtech.com.au