

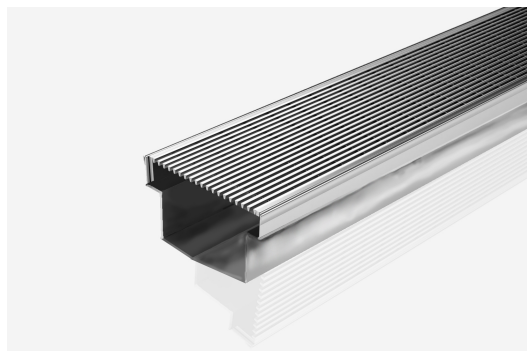


ARCHITECTURAL  
GRATES + DRAINS



# 100ARi50MTL

## Linear Drain



The 100ARi50MTL is a linear drainage system providing a solution for minimum stepdown requirement of 50mm in doorways.

Manufactured from sustainably sourced 316 marine grade stainless steel for durability, hygiene and luxurious visual appeal. This drainage is made to specified length with specified outlet position, featuring Stormtech's premium Architectural Grate (2mm wire/2.5mm gap).

Please be aware that for a pool installation or installation environment close to a surf beach, you may need to have your stainless steel grates electropolished.

**Code** 100ARi50MTL

**Range** 100

**Grate Style** AR

**Category** Made-to-Length

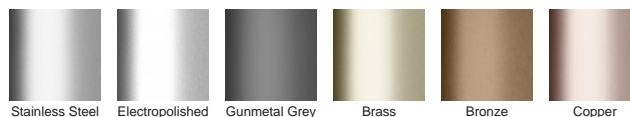
**Channel Material** Stainless Steel

**Steel Grade** 316

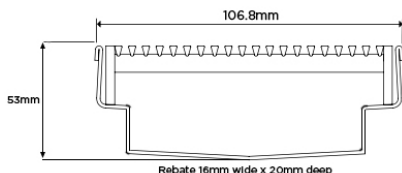
### SPECIFICATIONS + DIMENSIONS

|               |                        |
|---------------|------------------------|
| Channel Width | 107mm                  |
| Channel Depth | 53mm                   |
| Length(s)     | As Required            |
| Outlet Size   | DN40, DN50, DN65, DN80 |

### STORMTECH COLOUR FINISHES



Electroplate finishes subject to natural variation with time and local environment. Factors such as pools/surf beaches may require electropolishing. Contact us for suitability.



Grates longer than 1500mm supplied in sections. Tile Inserts longer than 1200mm supplied in sections. Channels over 3000mm supplied in sections with joiner. +/-2mm tolerance on dimensions.

### PRODUCT APPLICATIONS

|                             |                            |
|-----------------------------|----------------------------|
| Bathroom Drainage           | Hospitality Drainage       |
| Aged / Health Care Drainage | Paved Area Drainage        |
| Balcony Drainage            | Shower Drainage            |
| Commercial Drainage         | Multi-Residential Drainage |
| Courtyard / Patio Drainage  | Threshold Drainage         |
| Pool and Spa Area Drainage  | Wet Area Drainage          |

Copyright © Stormtech Pty Ltd. Patent 733361. Drawings not to scale, please use dimensions shown.  
Downloaded 14/09/2025 (please check for updates)



Visit **stormtech.com.au**  
for tools + inspiration.

Phone **1300 653 403**

Email **info@stormtech.com.au**